



DIGITAL PANEL INDICATOR



V , A , % , mA ,

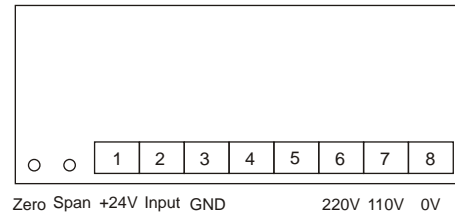
V , A , % , mA ,



4 ~ 20mA Digital Display Meter



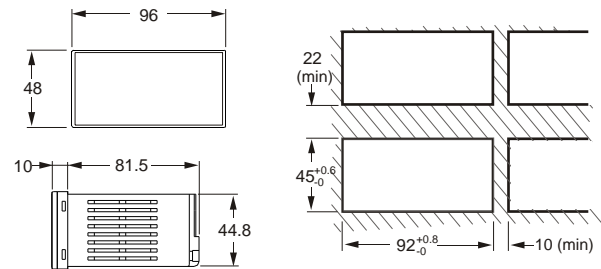
WIRING DIAGRAM:



FEATURES:

- Power Supply 110/220V AC.
- Measures 4 ~ 20mA process signals.
- Utilizes 4 digit 7 segment display, display range is -1999 to 1999.
- Able to shift position of decimal point for better clarity when measuring of signal.
- Able to adjust scaling so as to magnify the signal to a suitable display range.
- Zero and span calibration.
- Provides excitation 24V DC

DIMENSIONS / PANEL CUTOUT:



SPECIFICATIONS

Size (mm)	96 (W) X48 (H) X91.5 (D) IP65	
Model: PI	4 digit	5 digit
Power Supply	110/220V AC ± 10%, 50/60Hz	
7-segment Display	0.56" red or green 0.8" red or green	0.56" red or green
Input Signal	4~20mA Direct current	
A/D Converter	3 1/2 digits	4 1/2 digits
Accuracy	± 0.1% F.S. or ± 1 digit	
Sampling Timing	3 times per second	
Operating Environment	0~50°C (20~90% RH)	
Storage Environment	0°C~70°C (20~90% RH)	
Safety Regulation	2KVAC/1min	
Display range	-1999 ~ 1999	-19999 ~ 19999
Function	Overload display: "1" or "-1" Negative display: "-" Sample value setting: DIP switch Zero calibration: 0 ± 5% F.S Span calibration: 0 ± 10% F.S	

ORDERING INFORMATION:

PI - 1130 - <input type="checkbox"/> <input type="checkbox"/> 1 <input type="checkbox"/>	
Power Supply	C---110/220VAC 50/60 Hz
Color of Display	R---0.56" Red D---0.8" Red G---0.56" Green E---0.8" Green
Numeric Display	4--- 4 digit 5--- 5 digit

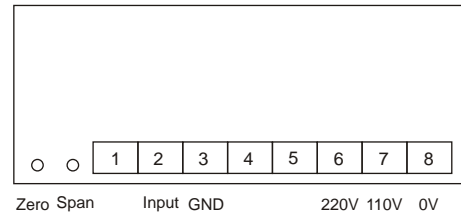
Example: PI-1130-CR14
 Input signal: DC4~20mA,
 Power supply: 110V AC or 220V AC (50/60Hz),
 Red 7-segment display.

★ Please call for customized specifications

DC Current Indication Meter



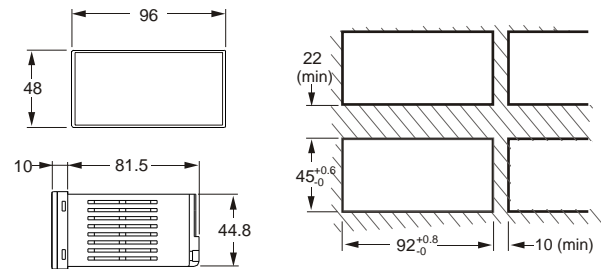
WIRING DIAGRAM:



FEATURES:

- Power Supply 110/220V AC.
- Measures direct current signals.
- Utilizes 4 digit 7 segment display, display range is -1999 to 1999.
- Able to shift position of decimal point for better clarity when measuring of signal.
- Able to adjust scaling so as to magnify the signal to a suitable display range.
- Zero and span calibration.

DIMENSIONS / PANEL CUTOUT:



SPECIFICATIONS

Size (mm)	96 (W) x48 (H) x91.5 (D) IP65	
Model: PI	4 digit	5 digit
Power Supply	110/220V AC $\pm 10\%$, 50/60Hz	
7-segment Display	0.56" red or green 0.8" red or green	0.56" red or green
Input Signal	Direct current	
A/D Converter	3 $\frac{1}{2}$ digits	4 $\frac{1}{2}$ digits
Accuracy	$\pm 0.1\%$ F.S. or ± 1 digit	
Sampling Timing	3 times per second	
Operating Environment	0~50°C (20~90% RH)	
Storage Environment	0°C~70°C (20~90% RH)	
Safety Regulation	2KVAC/1min	
Display range	-1999 ~ 1999	-19999 ~ 19999
Function	Overload display: "1" or "-1" Negative display: " - " Sample value setting: DIP switch Zero calibration: $0 \pm 5\%$ F.S Span calibration: $0 \pm 10\%$ F.S	

ORDERING INFORMATION:

PI - 30 - 1

Input Signal	21--- 0~20uADC	26--- 0~2ADC	▲ ▲
	22--- 0~200uADC	27--- 0~5ADC	
	23--- 0~2mADC	28--- 0~10ADC	
	24--- 0~20mADC		
	25--- 0~200mADC	20--- others	
Power Supply	C---110/220V AC 50/60 Hz		
Color of Display	R---0.56" Red	D---0.8" Red	▲
	G---0.56" Green	E---0.8" Green	
Numeric Display	4--- 4 digit	▲	
	5--- 5 digit		

Example: PI-2430-CR14

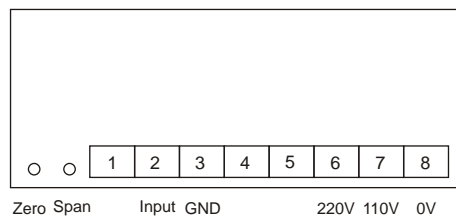
Input signal: 0~20mADC,
Power supply: 110V AC or 220V AC (50/60Hz),
Red 7-segment display.

★ Please call for customized specifications

DC Voltage Indication Meter



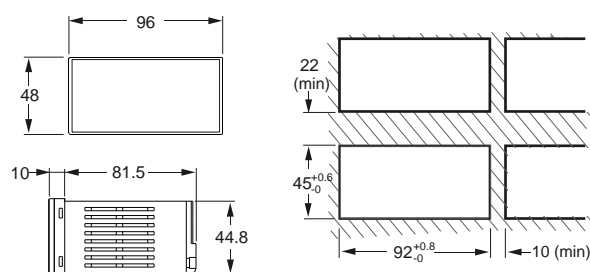
WIRING DIAGRAM:



FEATURES:

- Power Supply 110/220V AC.
- Measures direct voltage signals.
- Utilizes 4 digit 7 segment display, display range is -1999 to 1999.
- Able to shift position of decimal point for better clarity when measuring of signal.
- Able to adjust scaling so as to magnify the signal to a suitable display range.
- Zero and span calibration.

DIMENSIONS / PANEL CUTOUT:



SPECIFICATIONS

Size (mm)	96 (W) X48 (H) X91.5 (D) IP65	
Model: PI	4 digit	5 digit
Power Supply	110/220V AC $\pm 10\%$, 50/60Hz	
7-segment Display	0.56" red or green 0.8"	0.56" red or green
Input Signal	Direct voltage	
A/D Converter	3 $\frac{1}{2}$ digits	4 $\frac{1}{2}$ digits
Accuracy	$\pm 0.1\%$ F.S. or ± 1 digit	
Sampling Timing	3 times per second	
Operating Environment	0~50°C (20~90% RH)	
Storage Environment	0°C~70°C (20~90% RH)	
Safety Regulation	2KVAC/1min	
Display range	-1999 ~ 1999	-19999 ~ 19999
Function	Overload display: "1" or "-1" Negative display: "-" Sample value setting: DIP switch Zero calibration: $0 \pm 5\%$ F.S Span calibration: $0 \pm 10\%$ F.S	

ORDERING INFORMATION:

PI - 30 - 1

Input Signal	31--- 0~200mV DC 32--- 0~20V DC 33--- 0~200V DC 34--- 0~50mV DC 35--- 0~2V DC	36--- 0~5V DC 37--- 0~10V DC 38--- 0~600V DC 39--- 0~1000V DC 30--- others	
Power Supply	C---110/220V AC 50/60 Hz		
Color of Display	R---0.56" Red G---0.56" Green	D---0.8" Red E---0.8" Green	
Numeric Display	4--- 4 digit 5--- 5 digit		

Example: PI-3230-CR14

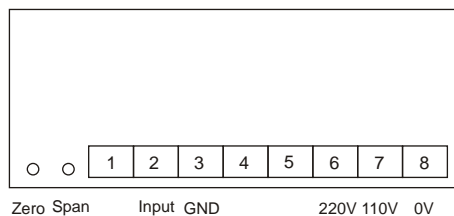
Input signal: 0~20V DC,
Power supply: 110V AC or 220V AC (50/60Hz),
Red 7-segment display.

★ Please call for customized specifications

AC Current Indication Meter



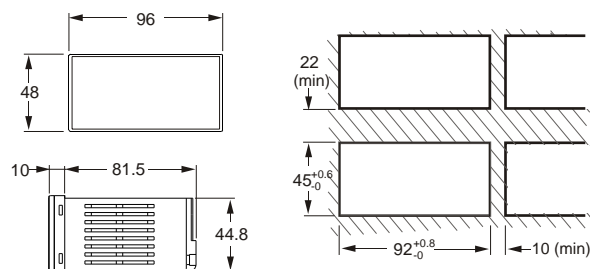
WIRING DIAGRAM:



FEATURES:

- Power Supply 110/220V AC.
- Measures alternating current signals.
- Utilizes 4 digit 7 segment display, display range is -1999 to 1999.
- Able to shift position of decimal point for better clarity when measuring of signal.
- Able to adjust scaling so as to magnify the signal to a suitable display range.
- Zero and span calibration.

DIMENSIONS / PANEL CUTOUT:



SPECIFICATIONS

Size (mm)	96 (W) x48 (H) x91.5 (D) IP65	
Model: PI	4 digit	5 digit
Power Supply	110/220V AC $\pm 10\%$, 50/60Hz	
7-segment Display	0.56" red or green 0.8"	0.56" red or green
Input Signal	Alternating current	
A/D Converter	3 $\frac{1}{2}$ digits	4 $\frac{1}{2}$ digits
Accuracy	$\pm 1\%$ F.S.	
Sampling Timing	3 times per second	
Operating Environment	0~50°C (20~90% RH)	
Storage Environment	0°C~70°C (20~90% RH)	
Safety Regulation	2KVAC/1min	
Display range	-1999 ~ 1999	-19999 ~ 19999
Function	Overload display: "1" or "-1" Negative display: "-" Sample value setting: DIP switch Zero calibration: $0 \pm 5\%$ F.S Span calibration: $0 \pm 10\%$ F.S	

ORDERING INFORMATION:

PI - □ □ 30 - □ □ 1 □		
Input Signal	41--- 0~20uA AC 46--- 0~2A AC 42--- 0~200uA AC 47--- 0~5A AC 43--- 0~2mA AC 48--- 0~10A AC 44--- 0~20mA AC 45--- 0~200mA AC 40--- others	
Power Supply	C---110/220V AC 50/60 Hz	
Color of Display	R---0.56" Red D---0.8" Red G---0.56" Green E---0.8" Green	
Numeric Display	4--- 4 digit 5--- 5 digit	

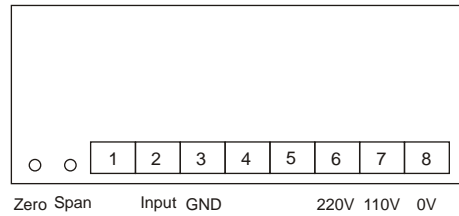
Example: PI-4130-CR14
 Input signal: 0~20uAAC,
 Power supply: 110V AC or 220V AC (50/60Hz),
 Red 7-segment display.

★ Please call for customized specifications

AC Voltage Indication Meter



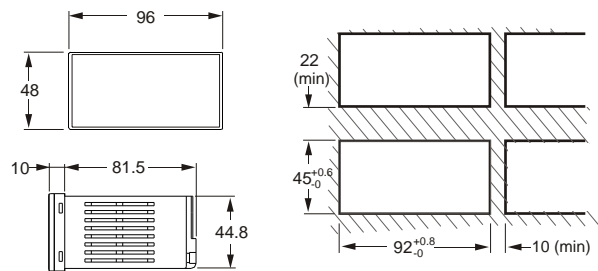
WIRING DIAGRAM:



FEATURES:

- Power Supply 110/220V AC.
- Measures alternating voltage signals.
- Utilizes 4 digit 7 segment display, display range is -1999 to 1999.
- Able to shift position of decimal point for better clarity when measuring of signal.
- Able to adjust scaling so as to magnify the signal to a suitable display range.
- Zero and span calibration.

DIMENSIONS / PANEL CUTOUT:



SPECIFICATIONS

Size (mm)	96 (W) X48 (H) X91.5 (D) IP65	
Model: PI	4 digit	5 digit
Power Supply	110/220V AC ± 10%, 50/60Hz	
7-segment Display	0.56" red or green 0.8"	0.56" red or green
Input Signal	Alternating voltage	
A/D Converter	3 1/2 digits	4 1/2 digits
Accuracy	± 1% F.S.	
Sampling Timing	3 times per second	
Operating Environment	0~50°C (20~90% RH)	
Storage Environment	0°C~70°C (20~90% RH)	
Safety Regulation	2KVAC/1min	
Display range	-1999 ~ 1999	-19999 ~ 19999
Function	Overload display: "1" or "-1" Negative display: "-" Sample value setting: DIP switch Zero calibration: 0 ± 5% F.S Span calibration: 0 ± 10% F.S	

ORDERING INFORMATION:

PI - 30 - 1

Input Signal	51--- 0~200mV AC 52--- 0~20V AC 53--- 0~200V AC 54--- 0~50mV AC 55--- 0~2V AC	56--- 0~5V AC 57--- 0~10V AC 58--- 0~600V AC 59--- 0~1000V AC 50--- others		
Power Supply	C--- 110/220V AC 50/60 Hz			
Color of Display	R--- 0.56" Red G--- 0.56" Green	D--- 0.8" Red E--- 0.8" Green		
Numeric Display	4--- 4 digit 5--- 5 digit			

Example: PI-5230-CR14
 Input signal: 0~20V AC,
 Power supply: 110V AC or 220V AC (50/60Hz),
 Red 7-segment display.

★ Please call for customized specifications